



***Society of Cable
Telecommunications
Engineers***

**ENGINEERING COMMITTEE
Interface Practices Subcommittee**

AMERICAN NATIONAL STANDARD

ANSI/SCTE 200 2016

**Specification for a 75 ohm 'MMCX' Connector (MMCX-75),
Male & Female Interface**

NOTICE

The Society of Cable Telecommunications Engineers (SCTE) Standards and Operational Practices (hereafter called “documents”) are intended to serve the public interest by providing specifications, test methods and procedures that promote uniformity of product, interchangeability, best practices and ultimately the long term reliability of broadband communications facilities. These documents shall not in any way preclude any member or non-member of SCTE from manufacturing or selling products not conforming to such documents, nor shall the existence of such standards preclude their voluntary use by those other than SCTE members.

SCTE assumes no obligations or liability whatsoever to any party who may adopt the documents. Such adopting party assumes all risks associated with adoption of these documents, and accepts full responsibility for any damage and/or claims arising from the adoption of such documents.

Attention is called to the possibility that implementation of this document may require the use of subject matter covered by patent rights. By publication of this document, no position is taken with respect to the existence or validity of any patent rights in connection therewith. If a patent holder has filed a statement of willingness to grant a license under these rights on reasonable and nondiscriminatory terms and conditions to applicants desiring to obtain such a license, then details may be obtained from the standards developer. SCTE shall not be responsible for identifying patents for which a license may be required or for conducting inquiries into the legal validity or scope of those patents that are brought to its attention.

Patent holders who believe that they hold patents which are essential to the implementation of this document have been requested to provide information about those patents and any related licensing terms and conditions. Any such declarations made before or after publication of this document are available on the SCTE web site at <http://www.scte.org>.

All Rights Reserved

© Society of Cable Telecommunications Engineers, Inc. 2016
140 Philips Road
Exton, PA 19341

Table of Contents

Title	Page Number
NOTICE	2
1. Scope	5
2. Normative References	5
2.1. SCTE References	5
2.2. Standards from other Organizations	5
3. Informative References	5
3.1. Standards from other Organizations	5
4. Compliance Notation	6
5. Definitions	6
5.1. Definitions	6
6. Electrical Requirements	7
7. Mechanical Dimensions	8
7.1. Female Socket	8
7.2. Male Plug	9
7.3. Center Pin	10
7.3.1. Insertion and Retention Force	10
7.4. Outer Plug	11
7.4.1. Insertion and Retention Force	12
7.5. Test Plug	13
7.6. Test Socket	14
8. Mechanical Requirements	15
8.1. Base Material	15
8.2. Plating	15
9. Environmental Requirements	15
9.1. Temperature	15
9.2. Specifications	15

List of Figures

Title	Page Number
FIGURE 1 – FEMALE SOCKET GEOMETRY	8
FIGURE 2 – MALE PLUG GEOMETRY	9
FIGURE 3 – GAUGE FOR CENTER PIN	10
FIGURE 4 – GAUGE FOR OUTER PLUG	11
FIGURE 5 – TEST PLUG	13
FIGURE 6 – TEST SOCKET	14

List of Tables

Title	Page Number
TABLE 1 – TABLE OF UNITS	6
TABLE 2 – ELECTRICAL REQUIREMENTS OF MMCX-75 PLUG – SOCKET INTERFACE ONLY	7
TABLE 3 – FEMALE SOCKET DIMENSIONS	8

ANSI/SCTE 200 2016

TABLE 4 – MALE PLUG DIMENSIONS	9
TABLE 5 – CENTER PIN GAUGE	10
TABLE 6 – OUTER PLUG GAUGE	12
TABLE 7 – TEST PLUG	13
TABLE 8 – TEST SOCKET	14
TABLE 9 – MECHANICAL REQUIREMENTS OF MMCX-75 PLUG – SOCKET INTERFACE	15
TABLE 10 – ENVIRONMENTAL SPECIFICATIONS	15

1. Scope

The purpose of this document is to specify requirements for the male/female interface of a 75 ohm, 3 GHz rated connector series generically known as MMCX-75. This is an indoor connector with applications in controlled environments such as headends and hubsites where high density platform chassis are used. MMCX-75 connectors are not intended to be mated with 50 ohm MMCX design counterparts.

All requirements of this document are measured after installation per manufacturer's instructions of the cable into the connector.

This document will address only the interface, not the connector body, the cable requirements, and the connector attachment to the cable or PC board. Mechanical, electrical and environmental performance is defined to ensure a reliable connection for permanent installations, as well as temporary adapters and calibration standards.

2. Normative References

The following documents contain provisions, which, through reference in this text, constitute provisions of the standard. At the time of Subcommittee approval, the editions indicated were valid. All standards are subject to revision; and while parties to any agreement based on this standard are encouraged to investigate the possibility of applying the most recent editions of the documents listed below, they are reminded that newer editions of those documents may not be compatible with the referenced version.

2.1. SCTE References

- ANSI/SCTE 04 2014 – Test Method for "F" Connector Return Loss
- ANSI/SCTE 48-1 2015 – Test Method for Measuring Shielding Effectiveness of Passive and Active Devices Using a GTEM Cell
- ANSI/SCTE 103 2012 – Test Method for DC Contact Resistance, Drop cable to F-Connectors and F81 Barrels
- ANSI/SCTE 144 2012 – Test Procedure for Measuring Transmission and Reflection

2.2. Standards from other Organizations

- Bellcore GR-1503-CORE 4.8
- IEC 60169-1
- EIA-364-65
- MIL-STD-202

3. Informative References

The following documents may provide valuable information to the reader but are not required when complying with this standard.

3.1. Standards from other Organizations

- MIL-STD-889

4. Compliance Notation

<i>shall</i>	This word or the adjective “ <i>required</i> ” means that the item is an absolute requirement of this specification.
<i>shall not</i>	This phrase means that the item is an absolute prohibition of this specification.
<i>forbidden</i>	This word means the value specified shall never be used.
<i>should</i>	This word or the adjective “ <i>recommended</i> ” means that there may exist valid reasons in particular circumstances to ignore this item, but the full implications should be understood and the case carefully weighted before choosing a different course.
<i>should not</i>	This phrase means that there may exist valid reasons in particular circumstances when the listed behavior is acceptable or even useful, but the full implications should be understood and the case carefully weighed before implementing any behavior described with this label.
<i>may</i>	This word or the adjective “ <i>optional</i> ” means that this item is truly optional. One vendor may choose to include the item because a particular marketplace requires it or because it enhances the product, for example; another vendor may omit the same item.
<i>deprecated</i>	Use is permissible for legacy purposes only. Deprecated features may be removed from future versions of the standard. Implementations should avoid use of deprecated features.

5. Definitions

5.1. Definitions

Table 1 – Table of Units

N	newtons
lbs	pound (force)
MΩ	megohm
mΩ	milliohms
MHz	megahertz
V_{rms}	volts root mean square
dB	decibel
in	inches
mm	millimeter
μm	micrometer
V	volts
kV	kilovolt

6. Electrical Requirements

Table 2 – Electrical Requirements of MMCX-75 Plug – Socket Interface only

<u>Electrical Specification</u>	<u>Min</u>	<u>Typ</u>	<u>Max</u>	<u>Unit</u>	<u>Comments</u>
Frequency Range	5		3000	MHz	
Nominal Impedance		75			
Insulation Resistance	1000			MΩ	(Per MIL-STD-202 Method 302)
Dielectric Withstand Voltage	500			Vrms	at sea level (per MIL-STD-202 Method 301)
Voltage Rating	300			Vrms	at sea level
Surge Withstand		1		kV	Combo Wave in accordance with IEEE C62.41 Category B3
Shielding Effectiveness			-70	dB	ANSI/SCTE 48-1 2007
Insertion Loss			0.2	dB	ANSI/SCTE 144 2012
Center Contact Resistance			10	mΩ	Initial
			18	mΩ	After Conditioning
Outer Conductor Continuity			4	mΩ	Initial
			8	mΩ	After Conditioning*
Return Loss	5-1002 MHz	25		dB	ANSI/SCTE 04 2014 Measuring from interface to PC board mount or interface to cable attachment.
	1-2 GHz	22			
	2-3 GHz	20			

* After Conditioning defined as any single test in Table 9. If a test procedure referenced in Table 9 already defines a maximum deviation from baseline, then that value takes precedence.

7. Mechanical Dimensions

7.1. Female Socket

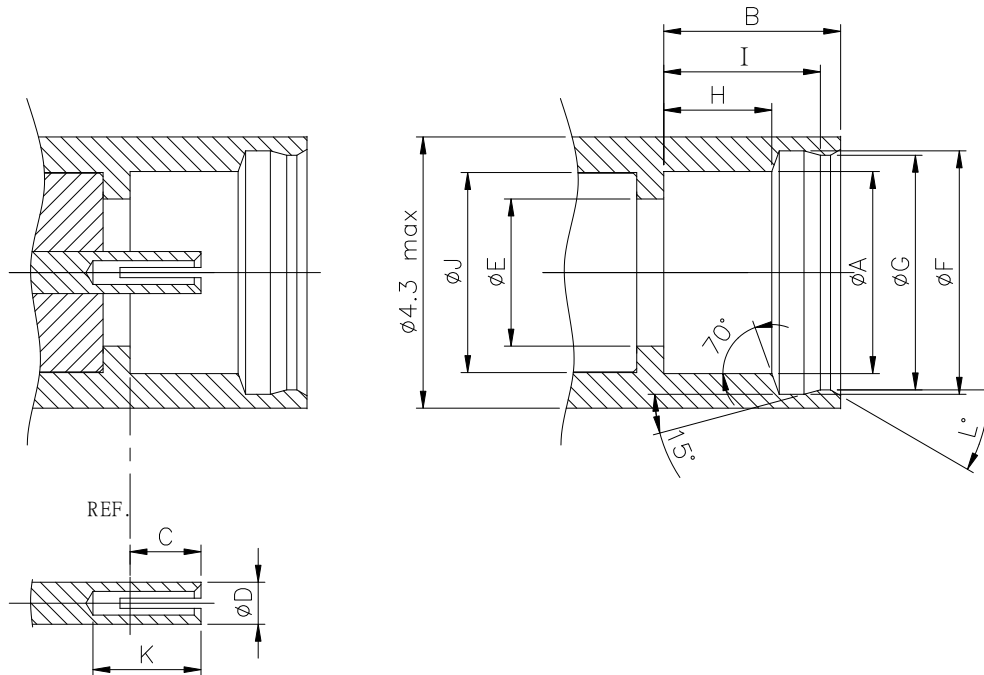


Figure 1 – Female Socket Geometry

Table 3 – Female Socket Dimensions

Reference	mm		in		Note
	Min	Max	Min	Max	
A	2.98	3.03	0.1173	0.1193	1, Diameter
B	2.59	2.65	0.1020	0.1043	
C	0.90	1.20	0.0354	0.0472	
D	0.6	0.64	0.0236	0.0252	Diameter
E	2.15	2.19	0.0846	0.0862	Diameter
F	3.57	3.61	0.1406	0.1421	1, Diameter
G	3.45	3.49	0.1358	0.1374	1, Diameter
H	1.57	1.63	0.0618	0.0642	
I	2.26	2.34	0.0890	0.921	
J	2.95	3.00	0.1161	0.1181	Diameter
K	1.40	2.00	0.0551	0.0787	
L	28	33			Degrees

1. Design to meet electrical and mechanical performance

7.2. Male Plug

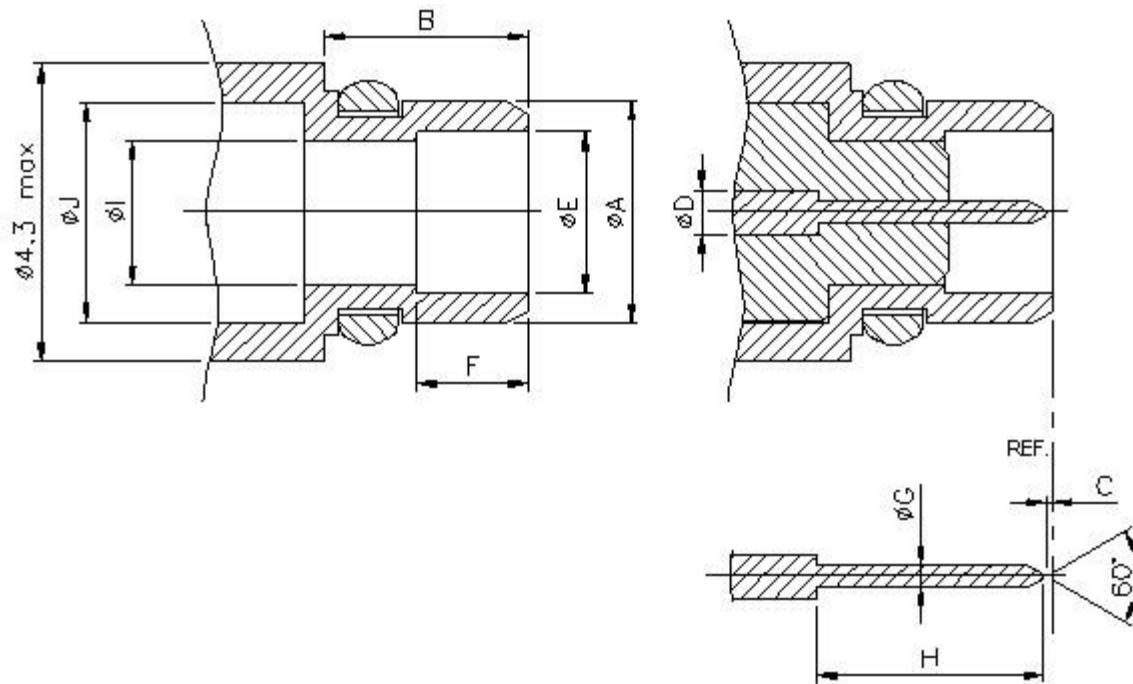


Figure 2 – Male Plug Geometry

Table 4 – Male Plug Dimensions

Reference	mm		in		Note
	Min	Max	Min	Max	
A	2.92	2.97	0.1150	0.1169	1, Diameter
B	2.70	2.76	0.1063	0.1087	
C	0	0.25	0	0.0098	
D	0.60	0.64	0.0236	0.0252	Diameter
E	2.15	2.19	0.0846	0.0862	1, Diameter
F	1.23	1.50	0.0484	0.0591	
G	0.29	0.31	0.0114	0.0122	Diameter
H	3.00	3.10	0.1181	0.1220	
I	1.95	2.00	0.0768	0.0787	Diameter
J	2.95	3.00	0.1161	0.1181	Diameter
	-	3.60	-	0.1417	Diameter
	-	1.20	-	0.0472	

1. Diameter chosen to meet mechanical and electrical requirements

7.3. Center Pin

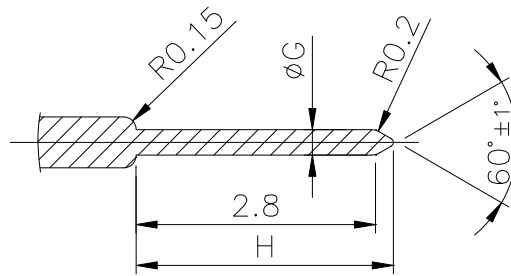


Figure 3 – Gauge for Center Pin

Table 5 – Center Pin Gauge

Ref.	Gauge A				Gauge B			
	mm		In		mm		in	
	min	max	min	max	min	max	min	max
H	3.02	3.08	0.1189	0.1213	3.02	3.08	0.1189	0.1213
G	0.313	0.318	0.01232	0.01252	0.287	0.292	0.01130	0.01150
	N		lbf		N		lbf	
	min	max	min	max	min	max	min	max
Insertion Force *	N/A	10	N/A	2.25	0.25	N/A	0.056	N/A
Retention Force *	N/A	10	N/A	2.25	0.25	N/A	0.056	N/A

Material: Steel, polished

Surface roughness Ra = 0.4 μm max (0.0157 mil)

* Measured as per sections 7.3.1.1. and 7.3.1.2.

7.3.1. Insertion and Retention Force

Depending on whether the MMCX-75 interface connections are to be used individually or in conjunction with a multi-connector header, the required interface insertion and retention forces can vary. The data in this specification is for individual connector mating forces. Manufacturer specifications for the female socket insertion and retention forces *should* meet equipment requirements when tested as follows

7.3.1.1. Gauge A

Gauge A is to be inserted and removed from the female connector socket 5 times. Both insertion force and retention force are to be measured during the fifth insertion and removal.

7.3.1.2. After testing

After testing is complete using Gauge A, then Gauge B is to be inserted and removed from the female connector socket while measuring insertion and retention force.

For an individual MMCX-75 Female socket the maximum insertion force *should not* exceed 10 N and the retention force *should not* exceed 10 N using Gauge A. The minimum insertion force *should not* be less than .25N and the retention force *should not* be less than .25N using Gauge B.

7.4. Outer Plug

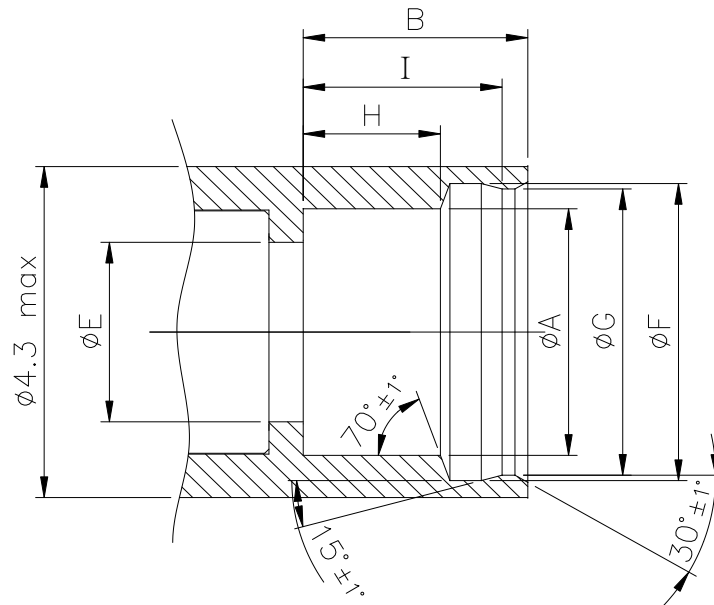


Figure 4 – Gauge for Outer Plug

Table 6 – Outer Plug Gauge

Ref.	Gauge A (max material)				Gauge B (min material)			
	mm		in		mm		in	
	min	max	min	max	min	max	min	max
A	2.98	3	0.1173	0.1181	2.98	3	0.1173	0.1181
B	2.59	2.61	0.1020	0.1028	2.59	2.61	0.1020	0.1028
E	2.15	2.19	0.0846	0.0862	2.15	2.19	0.0846	0.0862
F	3.57	3.59	0.1406	0.1413	3.57	3.59	0.1406	0.1413
G	3.45	3.465	0.1358	0.1364	3.475	3.49	0.1368	0.1374
H	1.57	1.6	0.0618	0.0630	1.57	1.6	0.0618	0.0630
I	2.26	2.28	0.0890	0.0898	2.26	2.28	0.0890	0.0898
	N		lbf		N		lbf	
	min	max	min	max	min	max	min	max
Insertion Force *	N/A	20	N/A	4.50	4.9	N/A	1.102	N/A
Retention Force *	N/A	63	N/A	14.16	4.9	N/A	1.102	N/A

Material: Steel, polished
Surface roughness Ra = 0.4 µm max (0.0157 mil)

* Measured as per sections 7.4.1.1. and 7.4.1.2.

7.4.1. Insertion and Retention Force

Depending on whether the MMCX-75 interface connections are to be used individually or in conjunction with a multi-connector header, the required interface insertion and retention forces can vary. The data in this specification is for individual connector mating forces. Manufacturer specifications for the male plug insertion and retention forces *should* meet equipment requirements when tested as follows

7.4.1.1. Gauge A

Gauge A is to be inserted and removed from the male connector plug 5 times. Both insertion force and retention force are to be measured during the fifth insertion and removal.

7.4.1.2. After Testing

After testing is complete using Gauge A, then Gauge B is to be inserted and removed from the male connector plug while measuring insertion and retention force.

For an individual MMCX-75 Male Plug connector the maximum insertion force *should not* exceed 63 N and the retention force *should not* exceed 20 N using Gauge A. The minimum insertion force *should not* be less than 4.9N and the retention force *should not* be less than 4.9 N using Gauge B.

7.5. Test Plug

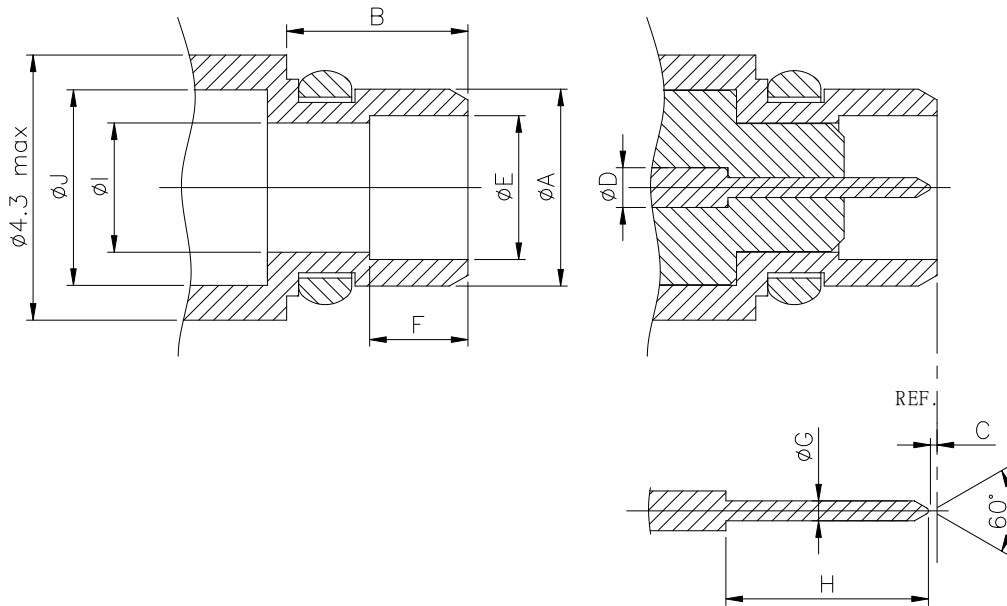


Figure 5 – Test Plug

Table 7 – Test Plug

Ref.	mm		in		Note
	min	max	min	max	
A	2.92	2.95	0.1150	0.1161	Diameter
B	2.7	2.76	0.1063	0.1087	
C	0	0.25	0.0000	0.0098	
D	0.6	0.64	0.0236	0.0252	Diameter
E	2.15	2.19	0.0846	0.0862	Diameter
F	1.23	1.4	0.0484	0.0551	
G	0.29	0.31	0.0114	0.0122	Diameter
H	3	3.1	0.1181	0.1220	
I	1.95	2	0.0768	0.0787	Diameter
J	2.95	3	0.1161	0.1181	Diameter

Mate with test plug five times. Engagement/Disengagement forces of Table 9 apply to first and last cycles.

7.6. Test Socket

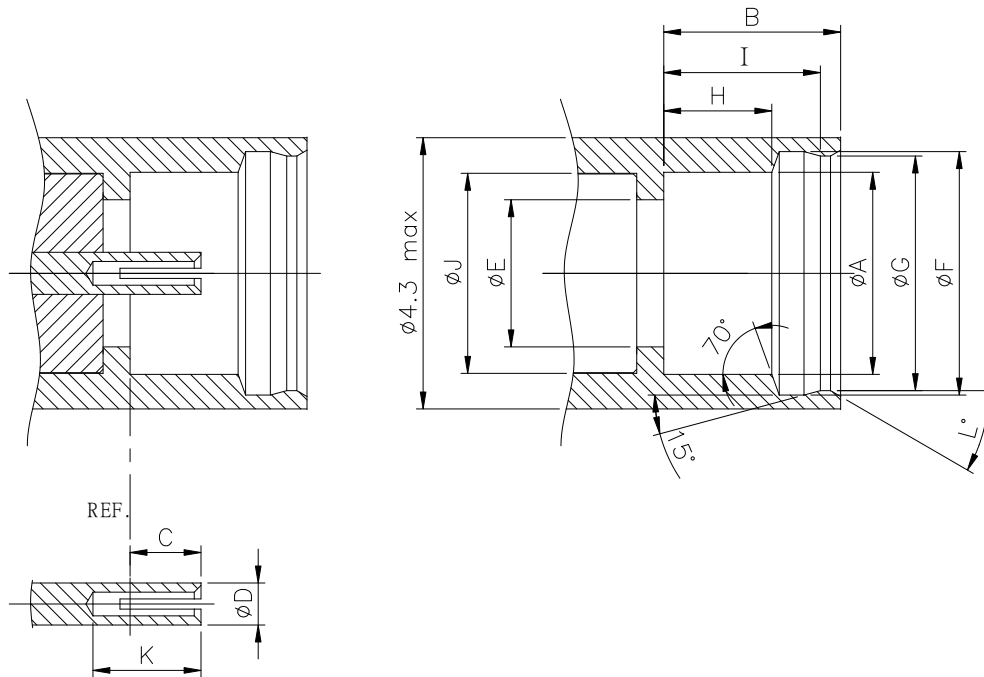


Figure 6 – Test Socket

Table 8 – Test Socket

Ref.	mm		in		Note
	min	max	min	max	
A	2.98	3.02	0.1173	0.1189	Diameter
B	2.59	2.63	0.1020	0.1035	
C	0.9	1.1	0.0354	0.0433	
D	0.6	0.64	0.0236	0.0252	Diameter
E	2.15	2.19	0.0846	0.0862	Diameter
F	3.57	3.61	0.1406	0.1421	Diameter
G	3.45	3.49	0.1358	0.1374	Diameter
H	1.57	1.63	0.0618	0.0642	
I	2.26	2.34	0.0890	0.0921	
J	2.95	3	0.1161	0.1181	Diameter
K	1.4	1.6	0.0551	0.0630	
	min	max			
L	28	33	degrees		

Mate with test socket five times. Engagement/Disengagement forces of Table 9 apply to first and last cycles.

8. Mechanical Requirements

8.1. Base Material

Metal or metal alloy such as brass or zinc.

8.2. Plating

Connector interface contact surfaces *shall* be gold plated. Other surfaces can be gold or nickel plated as per the manufacturer specifications. Any other plating chosen *should* be within .3V of Gold on the Anodic chart for galvanic compatibility.

Table 9 – Mechanical Requirements of MMCX-75 Plug – Socket Interface

Mechanical Specification	Min	Typ	Max	Unit	Comments
Contact Captivation	10 (2.25)			N (lbf)	For captive contact designs only. Center contact to connector body force.
Durability	500			cycles	

9. Environmental Requirements

9.1. Temperature

Temperature rating: -40C - +85C operational ambient temperature

9.2. Specifications

The following specifications *should* be included with the manufacturer's specifications and could vary depending on equipment requirements.

Table 10 – Environmental Specifications

Environmental Specification	Comments
Mechanical Shock	per MIL-STD-202, method 213, Condition B
Vibration	per MIL-STD-202, method 204, Condition B
Thermal Shock	per MIL-STD-202, method 107, Condition F
Chemical Resistance(indoor)	Bellcore GR-1503-CORE 4.7
Mix Flow Gas	max change over baseline as per EIA-364-65, Condition IIA